



GMR
INTER
CHANGE
INDIA'S BIGGEST HIGH-STREET

INDIA'S BIGGEST
HIGH-STREET
HYDERABAD





A SPACE TO UNLEASH
ONE'S INNER SHOPAHOLIC

A HAVEN FOR
CULINARY ADVENTURERS





A SANCTUARY FOR
MOVIE LOVERS

A PARADISE FOR
ENTERTAINMENT SEEKERS



A NEW LANDMARK DESTINED FOR GREATNESS



GMR Interchange, a visionary high-street destination currently under development in Hyderabad, promises a captivating blend of retail, dining, and entertainment options. As India's biggest high-street destination, it will cater to visitors of all ages and backgrounds, inviting them to immerse themselves in a vibrant world of possibilities.



AEROCITY HYDERABAD MASTERPLAN



**AIRPORT
TERMINAL**

GOLLAPAL
గొల్లపల్లి

SAINAMKAL
COLONY
సతంకల్
కాలనీ

Airport Rd

Airport Rd

600m

600m

AEROCITY ROAD

AEROCITY ROAD

AEROCITY ROAD

PARKING

METROSTATION

PARKING

6

STRATEGICALLY LOCATED EFFORTLESSLY CONNECTED

30-45 minutes drive from most of the prominent residential and IT hubs in Western, Central, and Eastern Hyderabad.

Convenient Access

Easy access for neighbouring cities and districts.

Macro Connectivity

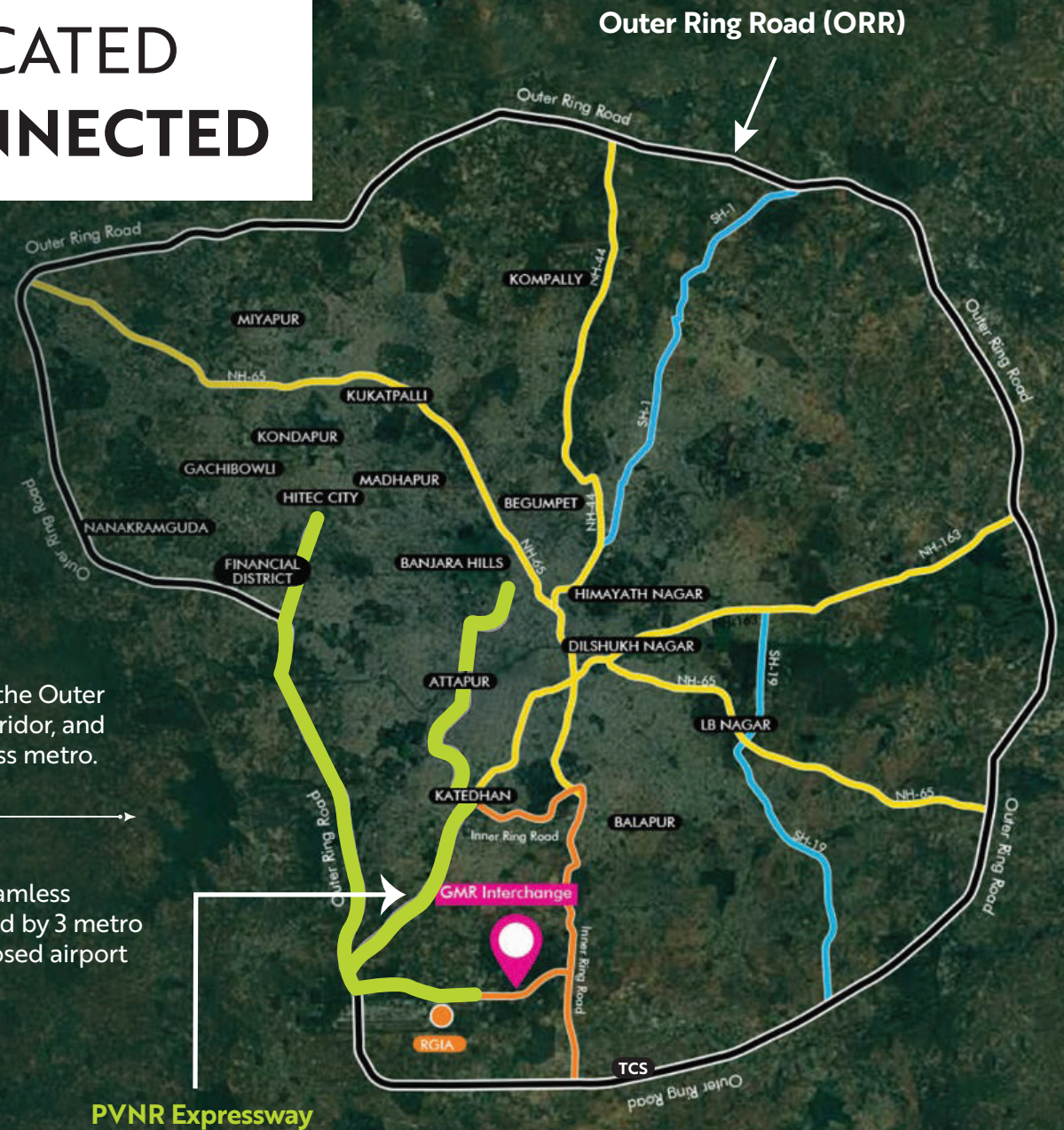
Seamless connectivity from the Airport offering direct flights to 90+ domestic & international destinations.

Local Connectivity

Robust connectivity via the Outer Ring Road, elevated corridor, and upcoming airport express metro.

Micro Connectivity

Master-planned with seamless internal mobility enabled by 3 metro stations along the proposed airport express line.





STANDOUT FEATURES DRIVING YOUR SUCCESS





INDIA'S BIGGEST HIGH-STREET DESTINATION

- Encompassing a vast area of 20 acres
- Expansive landscaped areas
- A comprehensive mix of fashion, dining options, entertainment zones, and a multiplex





INTEGRATED TRANSPORT SYSTEM

- Ample surface and basement parking
- A seamless experience for all visitors





AT THE EPICENTRE OF IT ALL

In proximity to:

- International Airport
- Offices
- Top schools and a university
- Convention centre and hotel
- Residential and co-living units



STATE-OF-THE-ART DESIGN

- Integrated indoor-outdoor architecture
- Alfresco seating area

A REMARKABLE DESTINATION HOME TO RENOWNED RETAIL BRANDS

Featuring everything from premium brands
and flagship stores to homegrown businesses.





A FOOD LOVER'S PARADISE FEATURING GLOBAL CUISINES

A curated selection of fine dining and casual eateries.

P.F. CHANG'S

19



65



THIRD CULTURE -
SPECIALITY COFFEE



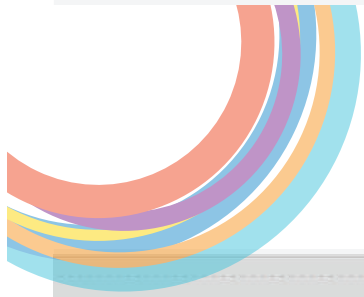


AN ENTERTAINMENT HUB FILLED WITH THRILLING ACTIVITIES



Discover a world of possibilities,
including a **multiplex**, **concert spaces**,
and **family entertainment centre**.

PVR INOX



INNOVATIVE DESIGN BOTH CONTEMPORARY & FUTURE-READY

GMR Interchange is designed to provide a one-of-a-kind experience that blends commercial, retail, and hospitality spaces.

1. Mall Entry/Exit
2. Driveway
3. Ramp to Basement
4. Drop-off
5. Decathlon
6. Cinema Entrance
7. Surface Car Park





THE INTERCHANGE EDGE BENEFITTING ALL

USPs FOR BRANDS

- Cinema + FEC + ample F&B category spread, making it the preferred destination to spend time with family & colleagues
- Terrace/Alfresco seating for all F&B brands
- In-store height: 6-11 metres in anchor, mini anchor, and F&B outlets, offering more space for brands to shine
- Live events & promotions: Dedicated zone for customer engagement programmes and events
- A unique platform to showcase your brand's identity

USPs FOR SHOPPERS

- Easy connectivity to all micro-markets of Hyderabad via the ORR/PVNR Expressway
- Enhanced accessibility through the proposed "Airport Express Metro"
- Open-air high-street experience with strategic and ample surface parking for easy access to their favourite brands
- Shuttle connectivity from the Airport Terminal and proposed Metro Station
- Buggy service to help shoppers move around
- Open-to-sky design featuring expansive landscaped areas



PROJECT HIGHLIGHTS

ABOUT THE DEVELOPMENT

Land Area:
20 acres

Built-up Area:
Over 8 lakh sq. ft.

Total GLA:
Approximately
6 lakh sq. ft.

Green Cover:
2 acres
of lush green landscape

DEVELOPMENT TIMELINE

Target Fit-out
Handover Date:
Q2 2025

Estimated
Date of Mall Launch:
Q3 2025

UNITS AND OFFERINGS

- Positioned as a Premium Lifestyle & Experiential Retail Destination
- Total Number of Units: 100+
- Anchors: 9 Major, 8 Mini Anchors
- Amenities: Cinema, Family Entertainment Centre, Food & Dining, Microbrewery, Alfresco Dining, Multi-Cuisine Food Court

PHYSICAL SPECIFICATIONS

- **Ground Floor Development:** 6-11 metres in-store height for Major Anchor, Mini Anchor, and F&B outlets
- **Entry/Exit Points:** Multiple
- **Parking:** Surface Parking Around the Mall with Direct Access and Entry at the Ground Floor:
- **4-Wheeler Capacity: 1200+**
- **2-Wheeler Capacity: 600+**





INDIA'S BIGGEST HIGH-STREET DESIGNED FOR YOUR SUCCESS

This is your chance to be a part of an ecosystem designed to bring together the finest offerings from India and across the globe. Join **GMR Interchange**, India's biggest high-street destination, brought to you by **GMR Group**.



Contact us

Nazir Husain - Nazir.Husain@gmrgroup.in | 9820897576

Sharath Varma - Sharath.Varma@gmrgroup.in | 9866323324

Follow us on

 www.instagram.com/gmraerocityhyderabad

 www.linkedin.com/company/gmr-aerocity-hyderabad

Visit us at

www.gmraerocityhyd.com